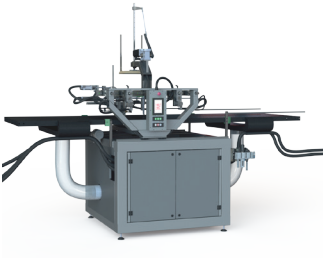


Perfect Gluing



The new gluer adopted on the S line makes identically glued sheets with precise output position. Gluing is not an issue anymore.

Evolved Pointing System



Increased precision in box centering and positioning constancy. Newly conceived electronics and an even more refined mechanics.

Success is a Quadstayer

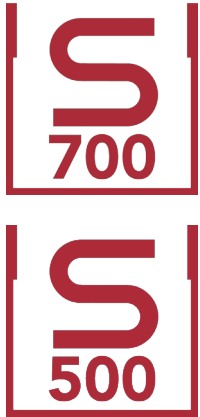


The new quadstayer installed in the S line is minimal, functional, more precise and quicker then ever: the heart of the S line is here to surprise.

Wrapped in Blankets




With the S line wrapper you can cover any type of box according to the various market requests. Simple, fast and easy to use, this machine is smart and precise.



 [sate.eu](http://sate.eu)

 [sales@sate.eu](mailto:sales@sate.eu)

 +39 0573 51045

**SATE**

A SANTINI GROUP COMPANY



**SATE**  
A SANTINI GROUP COMPANY

SATE s.r.l.  
via Quattro Querci 7  
Serravalle Pistoiese, Italy

the S line models can provide a large number of assets for your business



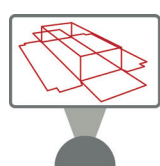
save time



quality



Framework



traces



custom kits



simple

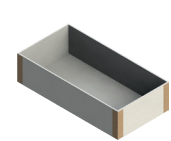


assistance

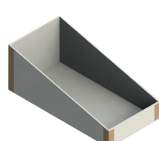


value

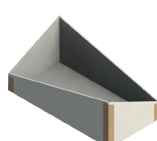
from the BIGGEST box to the smallest one in a blink of an eye!



X [normal]



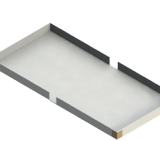
X [2 heights]



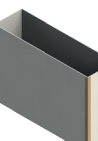
X [4 heights]



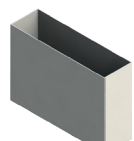
X [trapezoidal¹]



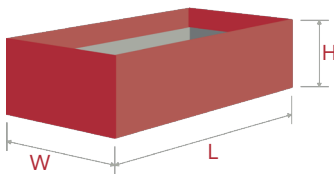
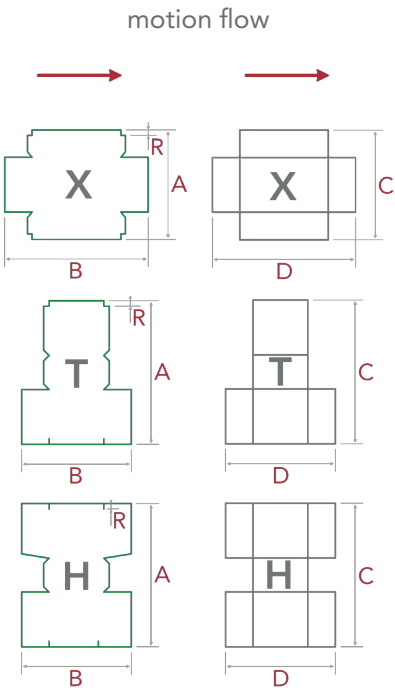
X [clamshell]



T



H



S  
700

S  
500

dimension		min	max	max
A		70 mm (2 3/4")	1070 mm (42 1/8")	520 mm (20 15/32")
B		120 mm (4 23/32")	1270 mm (50")	870 mm (34 1/4")
R		5 mm (0 13/64")	100 mm (3 15/16")	100 mm (3 15/16")
weight		70 g/m²	350 g/m²	350 g/m²
pile height		-	800 mm (31 1/2")	800 mm (31 1/2")
C		60 mm (2 23/64")	1000 mm (39 3/8")	510 mm (20 5/64")
D		60 mm (2 23/64")	1200 mm (47 1/4")	800 mm (31 1/2")
thickness		0,7 mm (0 1/32")	6 mm (0 15/64")	6 mm (0 15/64")
pile height		-	1500 mm (59 1/16")	1500 mm (59 1/16")
stay tape		up to	35 cycles/min	40 cycles/min
X	L	40 mm (1 37/64")	700 mm (27 9/16")	500 mm (19 11/16")
	W	40 mm (1 37/64")	500 mm (19 11/16")	350 mm (13 25/32")
	H	10 mm (0 25/64")	250 mm (9 27/32")	150 mm (5 29/32")
stay tape		up to	24 cycles/min	27 cycles/min
T	L	40 mm (1 37/64")	700 mm (27 9/16")	500 mm (19 11/16")
	W	40 mm (1 37/64")	200 mm (7 7/8")	100 mm (3 15/16")
	H	50 mm (1 31/32")	250 mm (9 27/32")	150 mm (5 29/32")
hot melt		up to	22 cycles/min	25 cycles/min
H	L	40 mm (1 37/64")	700 mm (27 9/16")	500 mm (19 11/16")
	W	40 mm (1 37/64")	200 mm (7 7/8")	100 mm (3 15/16")
	H	50 mm (1 31/32")	250 mm (9 27/32")	150 mm (5 29/32")
lenght			8280 mm (~27 ft)	7780mm (~25 ft)
width			5020 mm (~16 ft)	4520 mm (~14 ft)
height			4800 mm (~15 ft)	4800 mm (~15 ft)
net weight			10500 kg (23148 lb)	8500 kg (18739 lb)

spotter accuracy²	0,04 mm	glue tank capacity	90 l ( 23 U.S. gal )
format change³	20 min with 1 op.	power absorption	12,5 kW ( 40kW installed )
starting time	10 minutes	air consumption	175 l/min

Production schedules and efficiency are maximized to meet each clients need depending (and not limited to): type and specifications of materials used, personnel training and size of the product being processed. Technical information herein may be changed or updated without any notice. Verify that they coincide with those on [sate.eu](http://sate.eu)

The S line and each related machine are patented and protected by the applicable relevant international laws. Every unauthorized use of the informations inside this booklet will be persecuted.

- To produce the "Trapezoidal box" ask SATE for the kit needed. For optional accessories visit [sate.eu/extras](http://sate.eu/extras)
- Maximum repeatability error on spotter period.
- Time needed may change depending on the size chosen, training level and number of the operators.